

Table 1

Geometric Sequences

x	1	2	3
y	3	6	12

$12 \div 3 = 4$
 $6 \div 3 = 2$

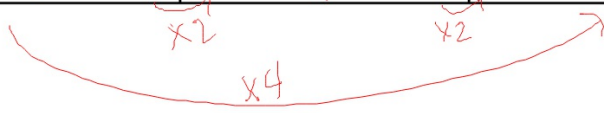


Table 2

x	1	2	3	4
y	7	35	175	875

5 is cubed root of 125
 $5 \cdot 5 \cdot 5 = 125$

$875 \div 7 = 125$

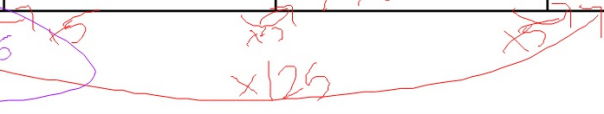


Table 3

x	1	2	3	4	5
y	6				96

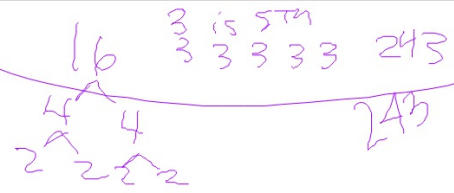
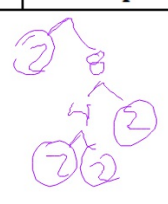
5 is cubed root of 125
 $5 \cdot 5 \cdot 5 = 125$

Table 4

x	1	2	3	4	5	6
y	4					972

2 is 4th root of 16
 $2 \cdot 2 \cdot 2 \cdot 2 = 16$

3 is the 5th root of 243



3 is 5th root of 243
 $3 \cdot 3 \cdot 3 \cdot 3 \cdot 3 = 243$

