

To Function or Not to Function

To Function or Not to Function

Definintion of a Function:

A relation where each input value has exactly one output value.

To Function or Not to Function

Definition of a Function:

A relation where each input value has exactly one output value.

Lets clarify by looking at examples and non-examples of functions in various representations.

To Function or Not to Function

input	output
0	2
1	6
2	18
3	54

To Function or Not to Function

input	output
0	2
1	6
2	18
3	54

Function

input	output
-3	2
-2	4
1	3
1	-2

NOT Function

To Function or Not to Function

$\{ (1, 6), (2, 18), (3, 54) \}$

To Function or Not to Function

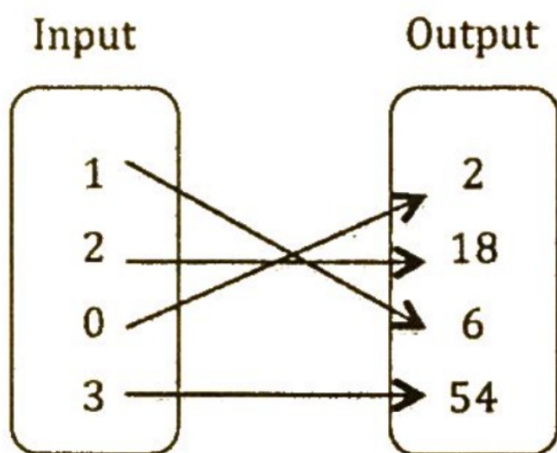
$\{ (1, 6), (2, 18), (3, 54) \}$

function

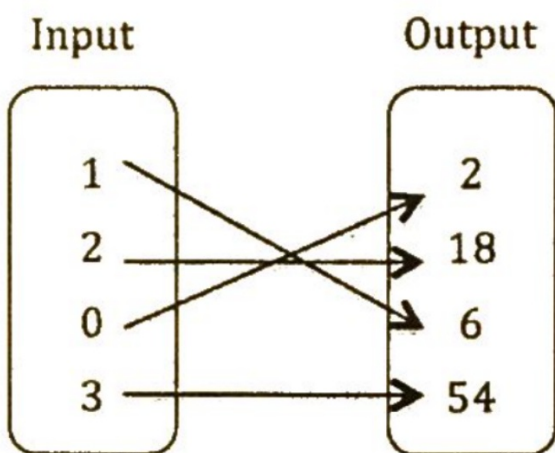
$\{ (-3, 2), (-2, 4), (1, 3), (1, -2) \}$

not function

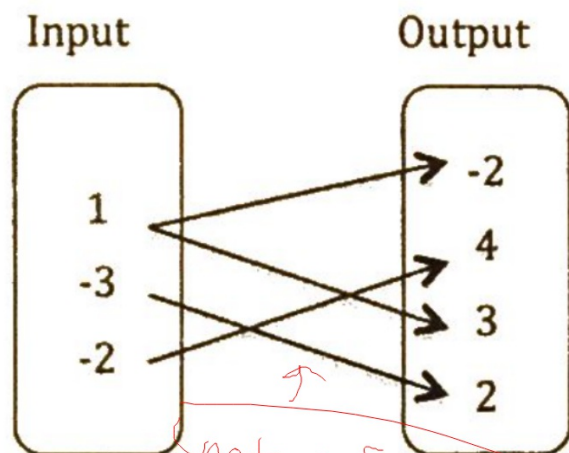
To Function or Not to Function



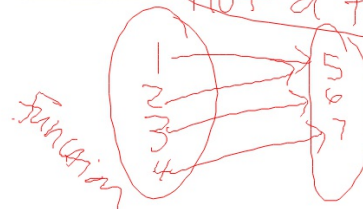
To Function or Not to Function



function

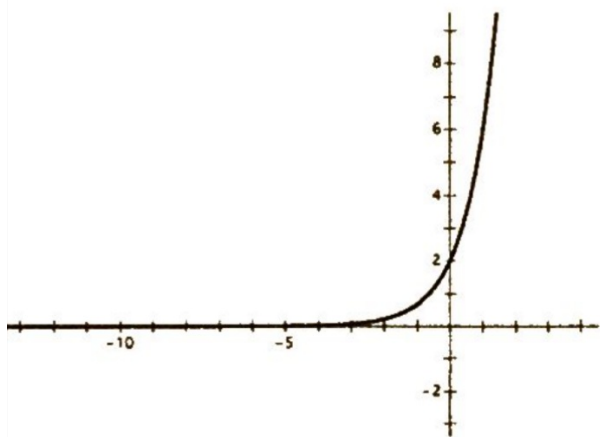


not a function

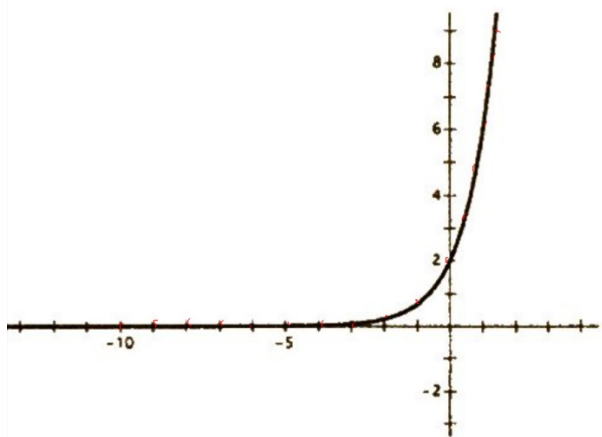


function

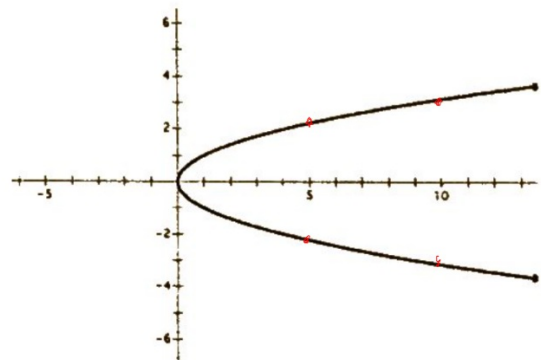
To Function or Not to Function



To Function or Not to Function



Function



Not function

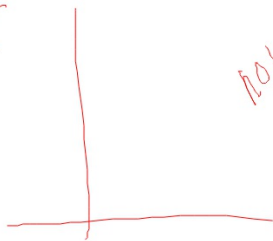
To Function or Not to Function

A student's name
with respect to the
math teacher they
have currently.

To Function or Not to Function

A student's name
with respect to the
math teacher they
have currently.

input: Teacher
output: Student



dependent/output

independent/
input

not a
function

A student's current math
teacher with respect to
their name.

input: Student name
output: math teacher
function

Card Activity!

To Function or Not to Function



To Function or Not to Function



To Function or Not to Function



To Function or Not to Function

