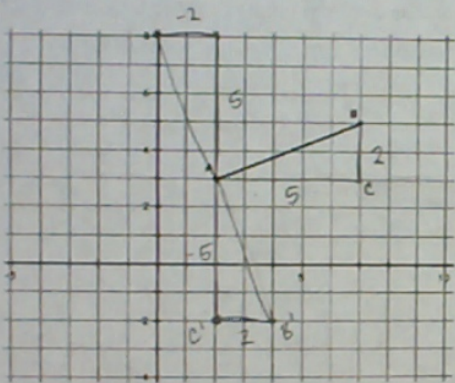
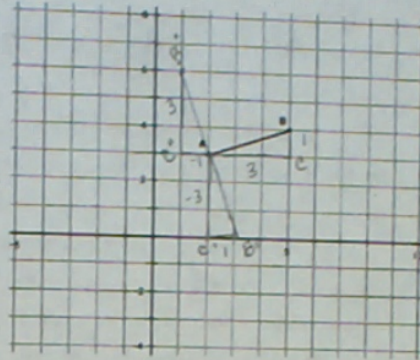


Experiment 2

Repeat steps 1-5 above for the points A (2, 3)

and B (5, 4). $m = \frac{1}{3}$ $m = -\frac{3}{1}$
 Pre-Image Image

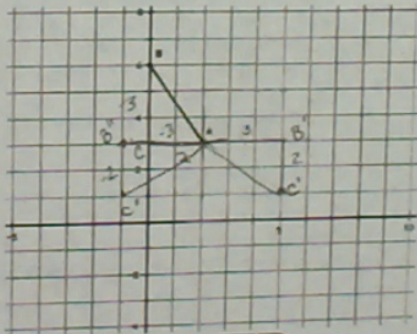


Experiment 3

Repeat steps 1-5 above for the points A (2, 3)

and B (7, 5). $\overline{BC} \perp \overline{AC}$ $m = \frac{2}{5}$ Pre-Image

$\overline{C'B'} \perp \overline{A'C'}$ $m = -\frac{5}{2}$ Image



Experiment 4

Repeat steps 1-5 above for the points A (2, 3)

and B (0, 6).

Pre-Image $\overline{BC} \perp \overline{CA}$ $m = -\frac{3}{2}$
 Image $\overline{B'O} \perp \overline{C'A'}$ $m = \frac{2}{-3} = -\frac{2}{3}$