

7.3

Skills:

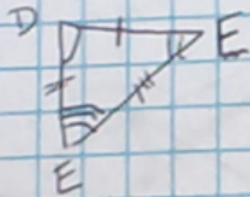
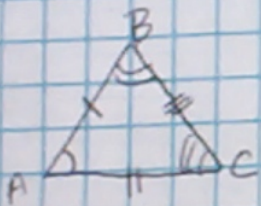
x	0	1	2	3	4	5	6
y	17	15	13	11	9	7	5

$\rightarrow \rightarrow \rightarrow -2$

Fill in the missing values then find the slope

$$\frac{\Delta y}{\Delta x} = \frac{-2}{1}$$

Congruence:  $\cong$  (is congruent to)  
 - same shape & same size (All sides & angles)



$$\begin{aligned} \overline{AB} &\cong \overline{DF} \\ \overline{AC} &\cong \overline{DE} \\ \overline{BC} &\cong \overline{EF} \end{aligned}$$

$$\begin{aligned} \angle A &\cong \angle D \\ \angle B &\cong \angle F \\ \angle C &\cong \angle E \end{aligned}$$